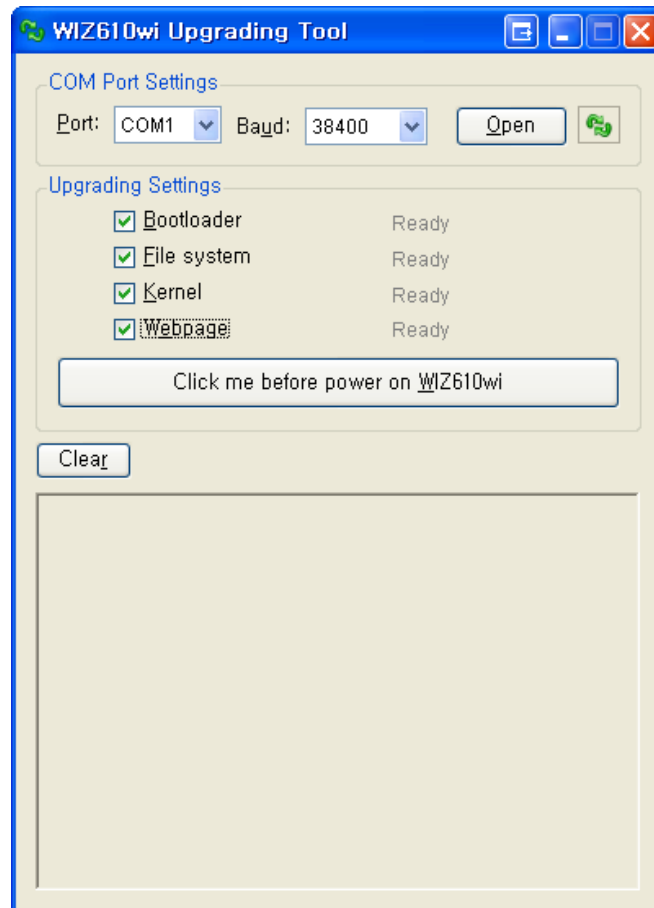


WIZ610wi/WIZ6000 Kernel Upgrading Guide

2010-06-03 by WIZnet



<Interface of WIZ610wiUpgrader>

PC Requirements

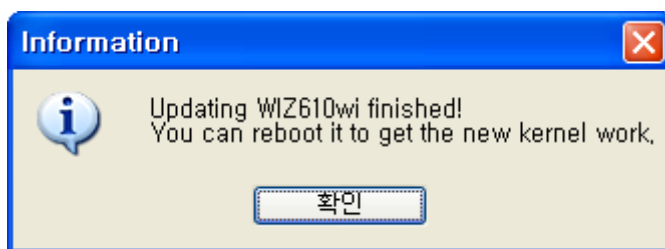
1. OS: Windows 2000 or more higher version
2. Hardware: One COM port or one USB-to-RS232 converter
One LAN card
3. Others: One RS232 cable and one UTP LAN cable

Usages

To upgrade the Bootloader, File system, Kernel or Webpage of WIZ610wi and WIZ6000. The firmware version will be v1.1.20 after upgrading, and the booting time will be reduced to about 20 seconds. For more features of this version, please refer the user manual of WIZ610wi.

Upgrading Steps

- Step 0. Factory reset WIZ610wi or WIZ6000 and close the Hardware Trigger (set to High)
- Step 1. Connect WIZ610wi/WIZ6000 with PC using both RS232 cable and LAN cable
- Step 2. Run 'WIZ610wiUpgrader'
- Step 3. Select connected COM port and open it with 38,400 baud-rate
- Step 4. Select which part to upgrade
- Step 5. Click 'Click me before power on WIZ610wi' button
- Step 6. Power on WIZ610wi or WIZ6000
- Step 7. Please waiting till the following message popped up



<Upgrading finished pop up message>

Note: Please do NOT power off or reset WIZ610wi/WIZ6000 during Bootloader upgrading. Any exception can cause WIZ610wi/WIZ6000 broken during Bootloader upgrading.
When 'TFTP Time out' error occurs, please check the network environment and then click the 'Click me...' button to retry it.